

# BÜKKÁBRÁNY

Bükkábrány



Google Earth

Image © 2021 CNES / Airbus  
Image © 2021 Maxar Technologies



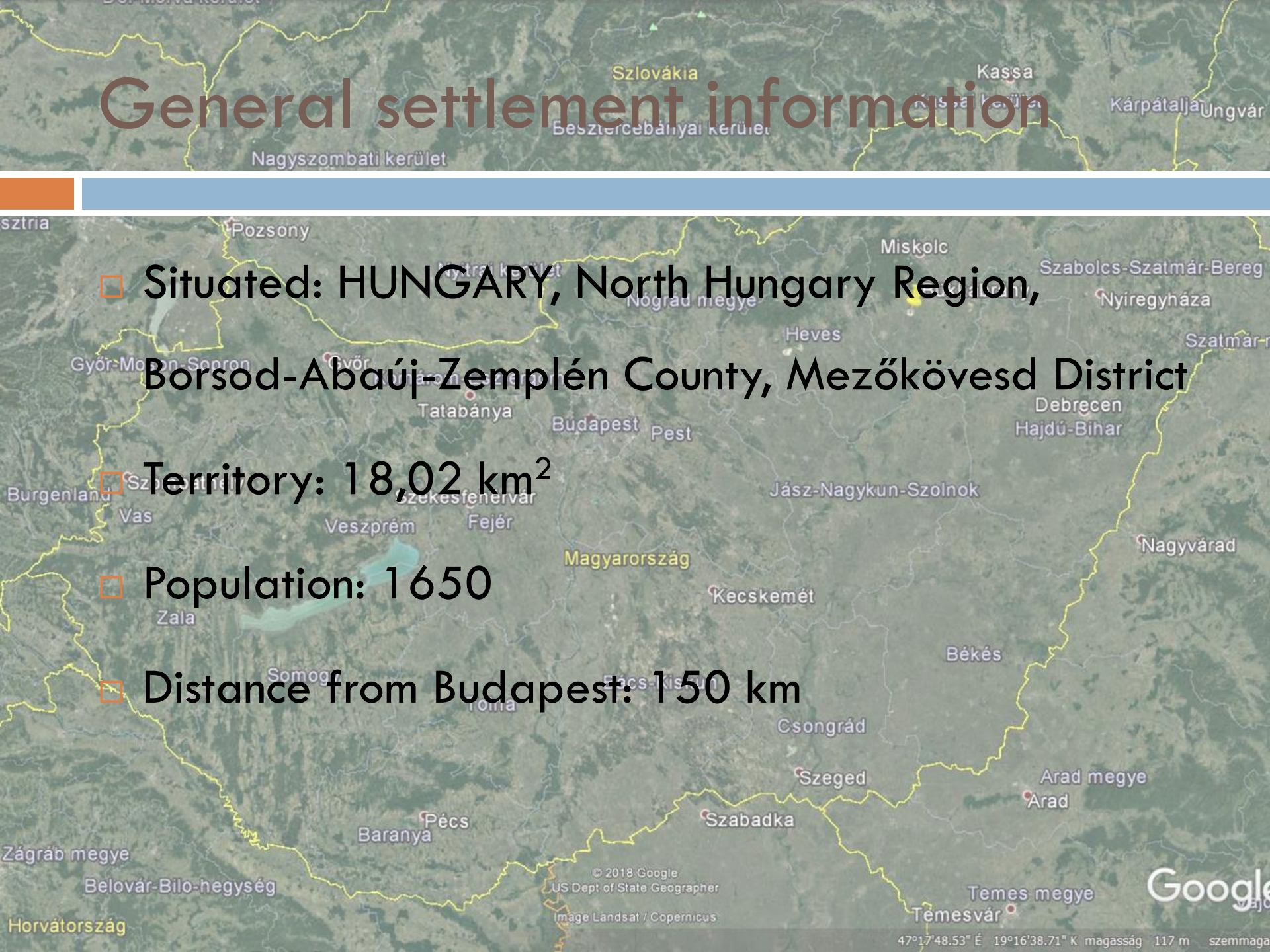
# General settlement information

□ Situated: HUNGARY, North Hungary Region,  
Borsod-Abaúj-Zemplén County, Mezőkövesd District

□ Territory: 18,02 km<sup>2</sup>

□ Population: 1650

□ Distance from Budapest: 150 km



# Short film about Bükkábrány



# Economy

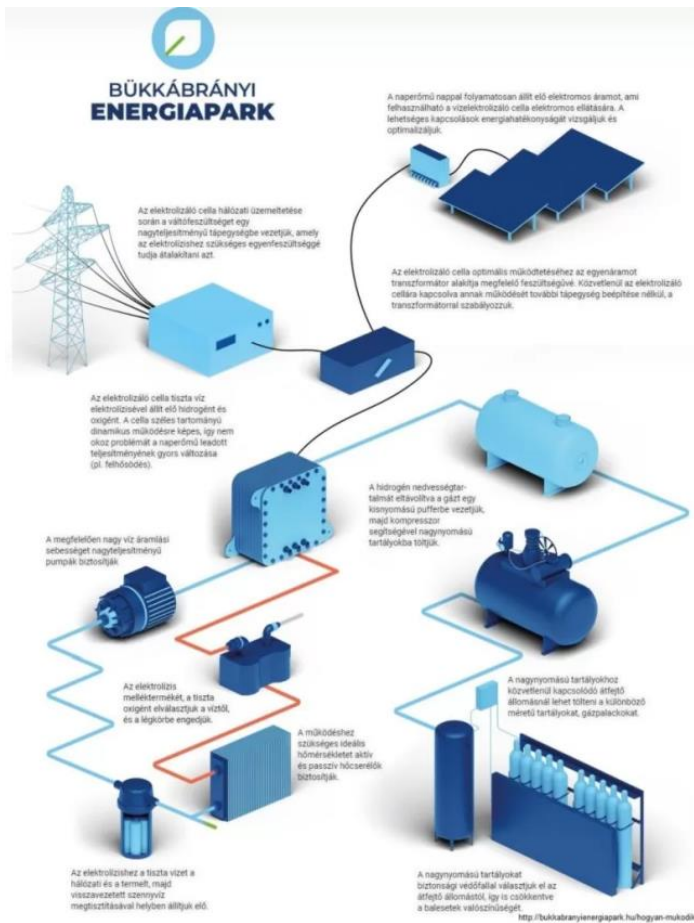
- Unemployment rate: 2-3 %
- Number of businesses: 160
- Size of industrial sites: 60 Ha
- Mine area: 700 Ha

# Mine



- Largest employer: Mining Plant in Bükkábrány (part of Máttra Powerplant MVM Máttra Energy)
- Number of employees: 510
- Raw material: lignite
- Mined quantity: 3 million tons/year
- Utilization: thermal power plant
- municipal business tax revenue: 180 million Ft, (of which part related to mine: 140 million Ft)

# 19.95 MW PV Power Plant and hydrogen pilot projekt in the Bükkábrány mine (abandoned waste dump sites)



## Technical data:

- > Starting date of the construction: 13.09.2018.
- > Start of operations: 15.02.2019.
- > PV panels: 63.840 × 355W CanadianSolar
- > Inverters: 20 × 1000 kW SMA CompactSt
- > Costs: 5,5 Mrd HUF

# Public institutions

- „Napsugár” Kindergarten and Nursery
  - ▣ Children: 90
  - ▣ Staff: 15
- Arany János Primary School
  - ▣ Children:165
  - ▣ Staff:21
- Joint Local Government Office
  - ▣ Employees:12
- House of Goodluck
  - ▣ Employees:2
- Sándor Jánosházi Library and Community Center

# Energy measures

- ❑ Kindergarten: (external insulation, plastic doors and windows, solar panels (2x10 kw))
- ❑ Electricity cost: approx. 50 eurocent/month
- ❑ School building: (external insulation, doors and windows replacement, solar panels (50kw) Energy saving: about 40%)
- ❑ Community Center: solar panels (10kw)
- ❑ Municipal Office: sun tracking system
- ❑ Locker room for sport facilities: solar panels, electric car charger



# House of Goodluck

- mining and archeological museum
- was built in 2019
- Funds: Territorial and settlement development OP + municipal found
- Purpose:
  - preservation and presentation of mining traditions and archaeological finds
  - Tourism
  - event venue



# Risks with mine closure

An aerial photograph of a large-scale open-pit mine. The landscape is dominated by terraced levels of earth and rock, with various pieces of heavy machinery, including conveyor belts and processing equipment, scattered across the site. The overall scene depicts a complex industrial operation in a rugged, hilly terrain.

- Unemployment
- loss of tax revenue
- maintenance of municipal institutions
- decline in revenue from services
- Migration

# Opportunities

- economic diversification
- Workplace creation
- energy or tourism utilization of waste dumps
- projects with a regional impact
  - ▣ industrial development
  - ▣ construction of a theme park (tourism)





„Bükkábrány, innovation and respecting tradition!”

Thank you for your attention!