



LIFE IP North-HU-Trans

LIFE19 IPC/HU/000009

Just Transition in North Hungary

Dr. Zsuzsa Piskóti-Kovács – Csaba Vaszkó

International Conference on Knowledge Transfer about **Just Transition**

25 May 2022



FOR JUST TRANSITION

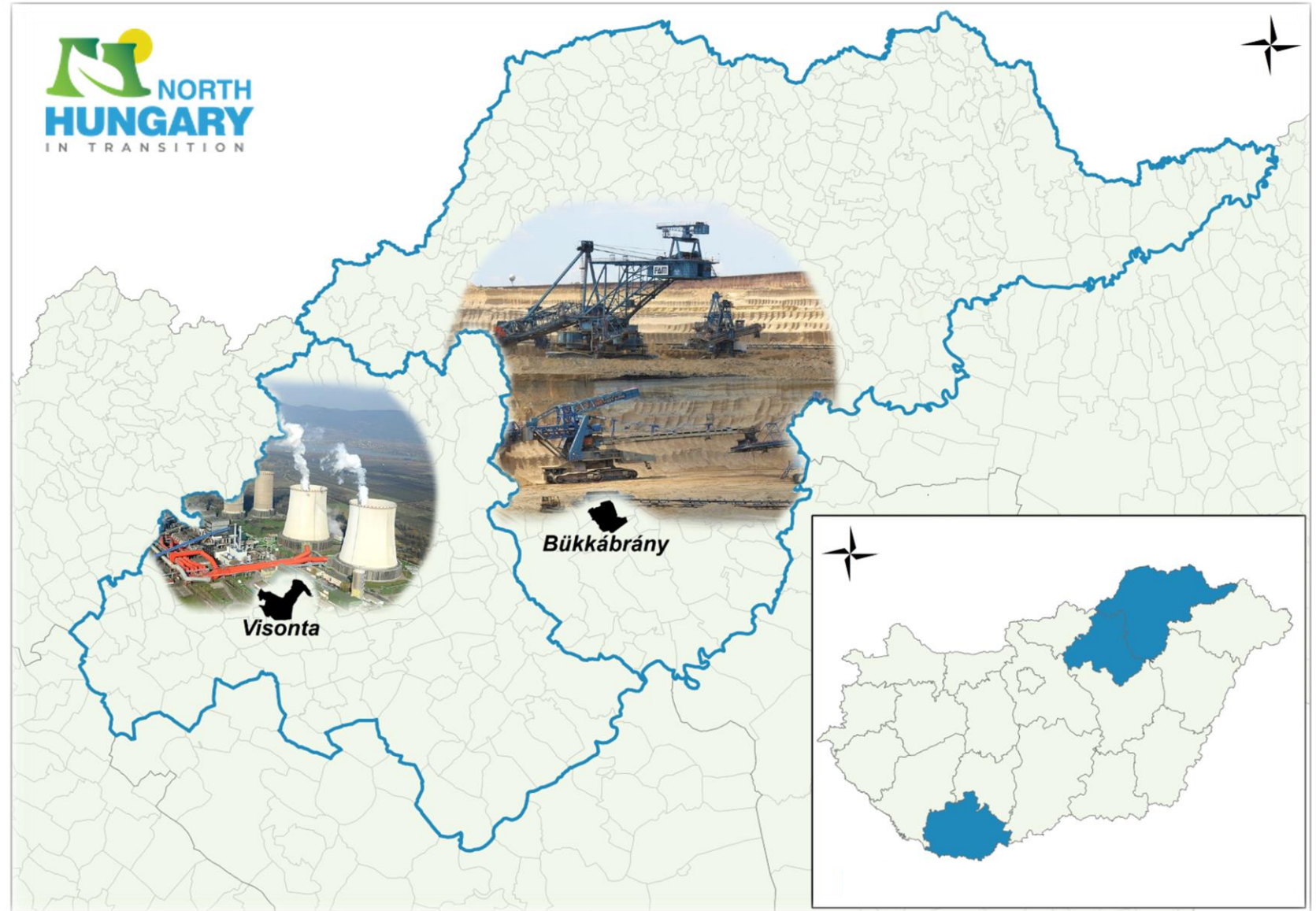
I. Introduction

Open-pit lignite
mines

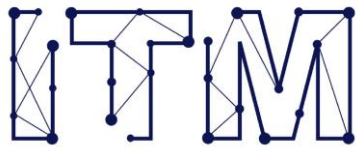
Rural area

Labour market role

Phase out date
2030

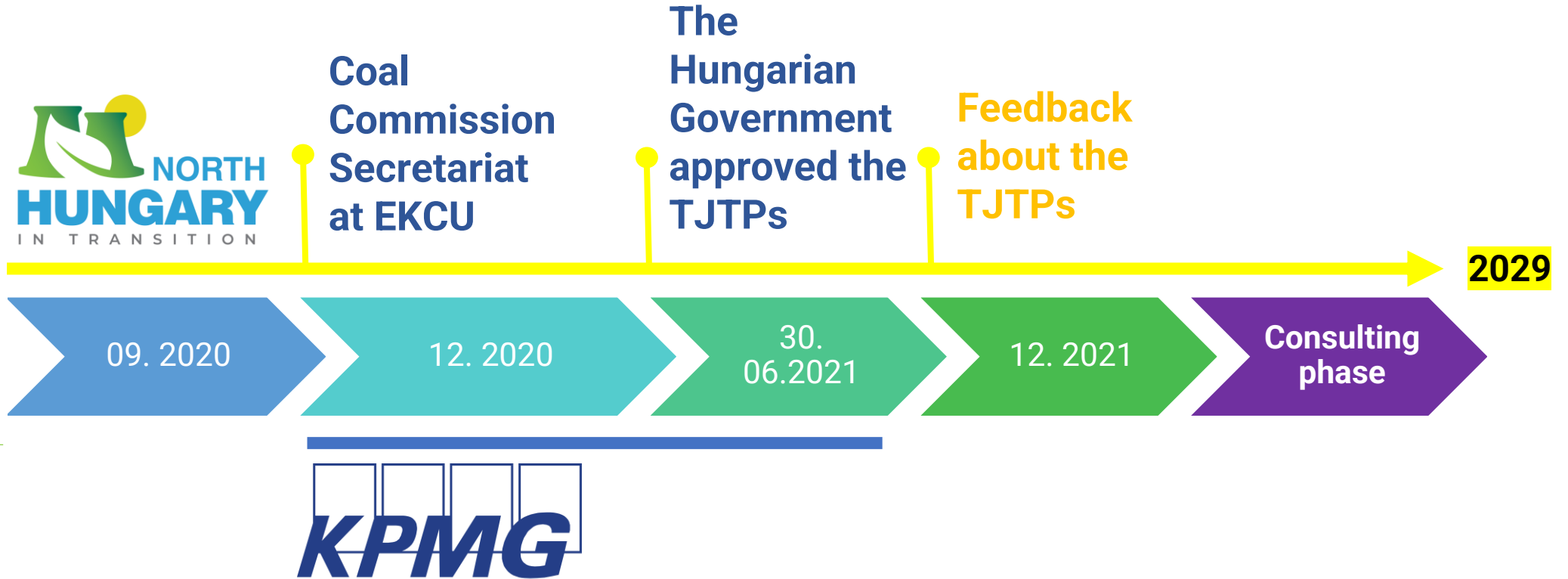


II. The process and the actors



FELADATUNK A JÖVŐ

Deputy State Secretary for Climate Policy and the Climate Policy Department



III. The role of Coal Commission Secretariat

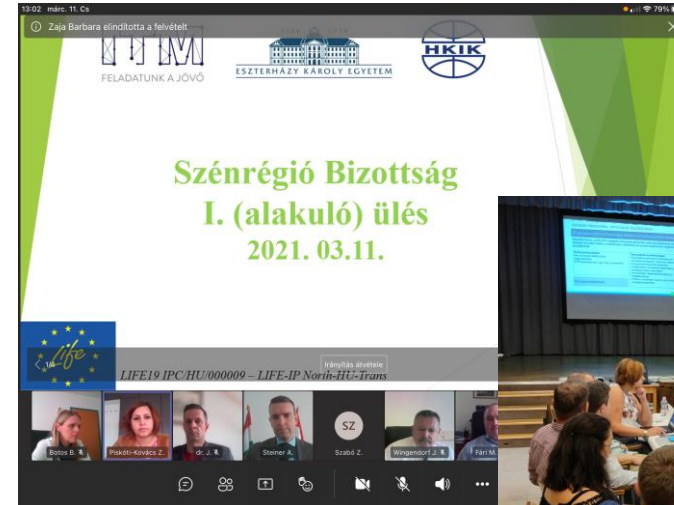
Mapping the stakeholders of transition, interviews

Engagement of stakeholders

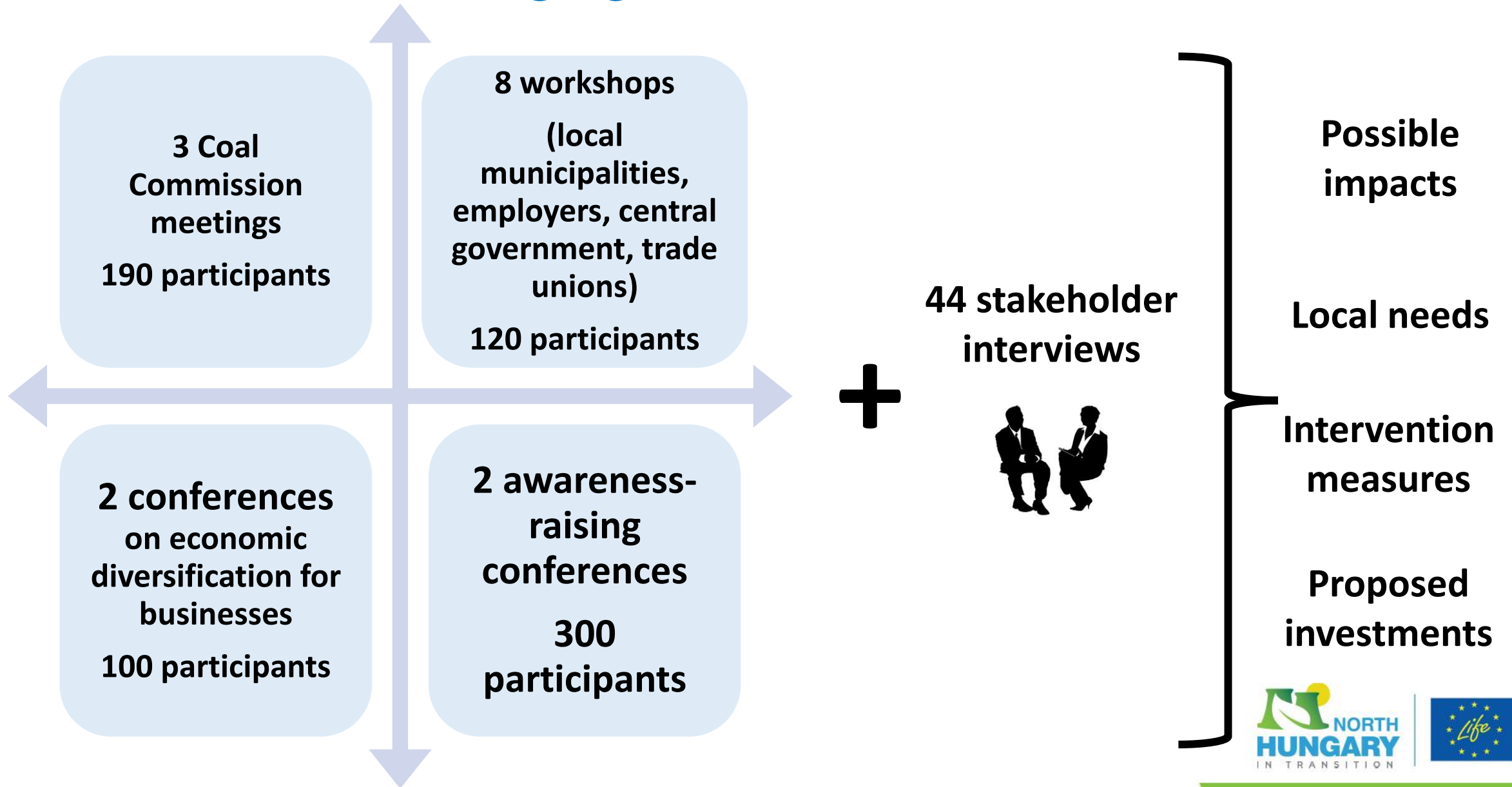
Establishment of Coal Commission

Workshops with stakeholders

Technical assistance for stakeholders



IV. Stakeholder engagement activities



V. Regional and local needs

Workforce

(direct employees of lignite; supply chain and industrial park + ETS)



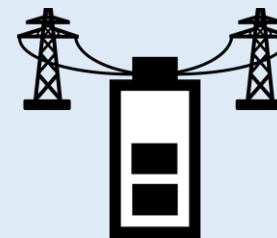
Economic transition

(large enterprises vs. SME, ETS investments, green economy)



Energy storage

(growing weather-dependent renewables)



Residential lignite

(health impacts, high investment costs, social tensions)



Green mobility

(interurban transport is at risk; future use of mine roads)



Land use of mines

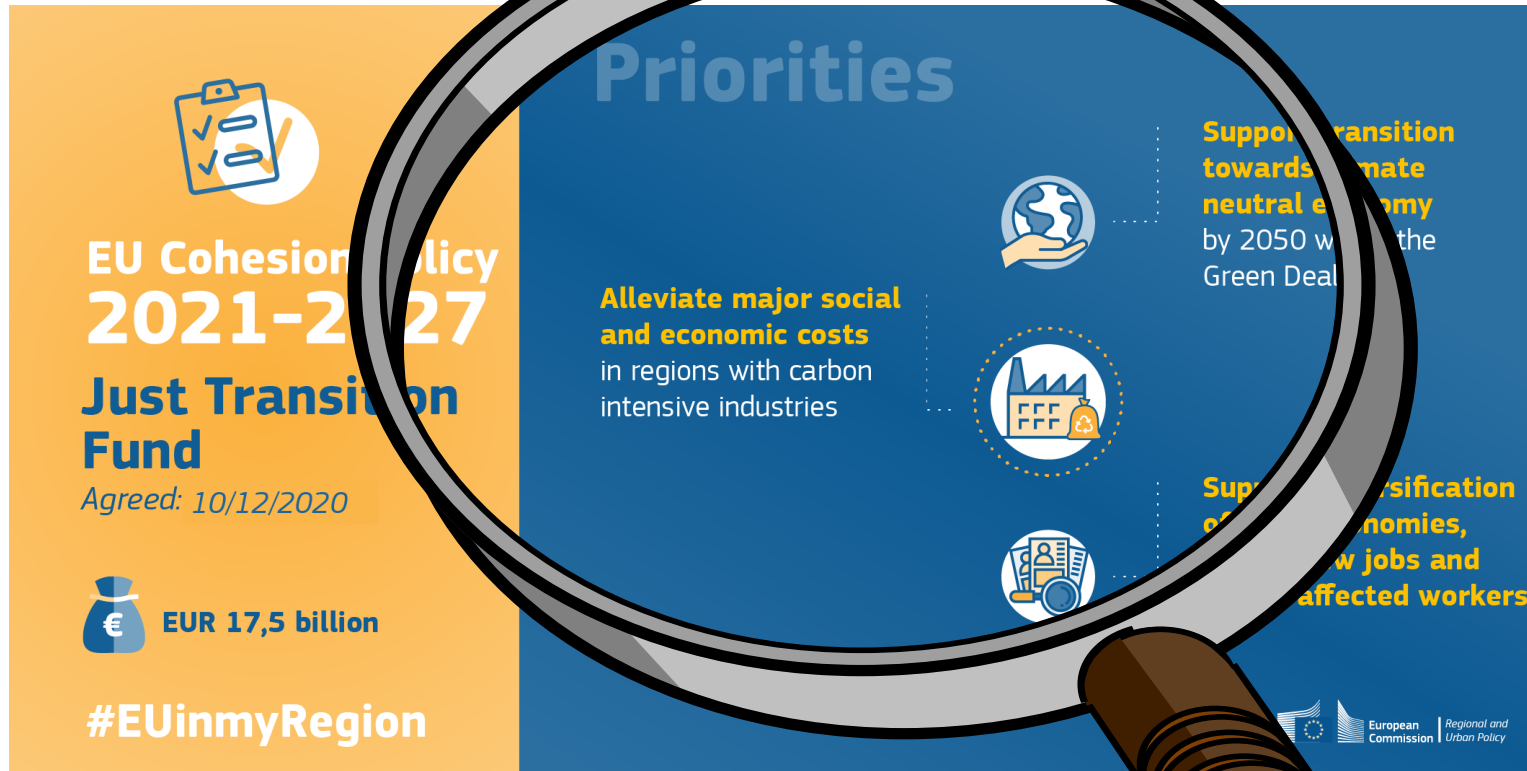
(avoid large no-go areas, integrate mine sites into local socio-economic life)



ORTH
ARY
ITION



VI. Matching the eligible activities of the JTF



Transition towards climate neutrality

Diversification of local economies

Decent opportunities for workers and jobseekers

VII. Intervention measures

Address impacts of the transition

Workers

Support career change for: Direct employees of the lignite sector + supply chain + ETS

Economy

New investments (SME, large and ETS) to reduce GHG emission; save jobs; engage SME suppliers; green economy

Energy

Pilot energy storage projects to provide flexibility for growing renewables AND energy community projects

Households

Energy community based investments to reduce lignite in home heating; Focus on low income households;

Mobility

Low-carbon transition of transportation of workers and demand-driven interurban transport

Repurposing

Mining cultural heritage based recreation and tourism;

VIII. Next steps, issues to be clarified

- Further segmentation of the different **groups of workers** according to their vulnerability (age, skills, marketable competences etc.)
- Clarify how to **keep workers in employment** when a retraining programme lasts two years
- Clarify the **impacts of the planned investments** on employment and local economic diversification
- Narrow down the geographical scope to decide whether **priority or open calls** for proposals are needed
- Determine how large enterprises should be obliged to **include SME suppliers** in tenders
- Define the **participation of ETS facilities** and the conditions for their involvement of SME suppliers in their investments
- Define **green economic activities** with growth potential in the region
- Clarify legal, technical, economic and operational **conditions of energy community** investments to reduce the lignite use of household.



FOR JUST **TRANSITION**



LIFE IP NORTH-HU-TRANS (LIFE19 IPC/HU/000009) PROJECT
WITH THE CONTRIBUTION OF THE LIFE PROGRAMME OF THE EUROPEAN COMMISSION